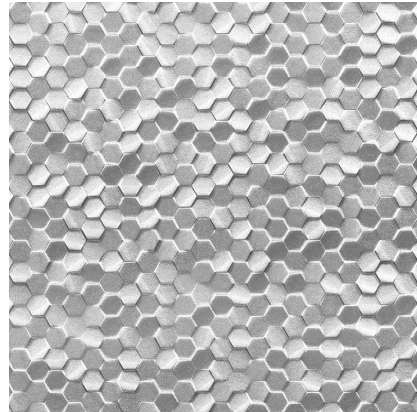


Model: DUBAI SILVER(5P/C) 33,3X100(A)

Codes: 100295153

Water absorption: BIII - Revestimiento (10%≤E≤20%)



## DIMENSIONAL FEATURES

UNE-EN ISO 10545-2

Thickness	9.3 MM	+/-5%*
Width	332.8 MM	
Length	1000 MM	
Length and width deviation	Below 0.15%	+/-0.3%*
Side straightness deviation	Below 0.15%	+/-0.3%*
Squareness deviation	Below 0.15%	+/-0.3%*
Surface flatness deviation	Below 0.15%	+/-0.4%*

\*ISO-13006:2018 UNE-EN 14411:2016

## MECHANICAL FEATURES

UNE-EN ISO 10545-4-6-7-11

Breaking strength	1090 N	>600N*
Modulus of rupture	25 N/MM2	>=12N/mm2*
Abrasion resistance	No Aplica	
Crazing resistance	Resists 3 cycles	

\*ISO-13006:2018 UNE-EN 14411:2016

## HYGIENIC FEATURES

UNE-EN ISO 10545-13-14:1995

Chemical resistance	Class "A" for swimming pools and cleaning products (resists attack). Minimum Class "B" for acids and bases	B Min.*
Stain resistance	Class 5. Easy cleaning with water	3 Min.*

\*ISO-13006:2018 UNE-EN 14411:2016

## SCOPE OF USE

Technical code-1	Use on walls	
------------------	--------------	--

## ANTI-SLIP VALUE

EN 16165: 2022 / ASTM C1028

Friction (dry)	No Aplica	
Friction (wet)	No Aplica	
Slip resistance (dcof)	No Aplica	

\*ISO-13006:2018 UNE-EN 14411:2016

System Certification



Do not use cleaning agents containing hydrofluoric acid.

It is recommended to fix tiles with a minimum joint of 1,5 mm. Do not fix without joint.

For big sizes, it is recommended to fix with mortars containing polymeric additives and to use the double gluing technique.

Mosaic tiles must be grouted.

This document is only commercial and cannot be used as expert opinion, documentary evidence or in any legal or administrative procedure unless authorized by PORCELANOSA S.A.

## PACKING

Sales units per box	1.665002 M2/BOX
Sales units per pallet	73.260073 M2/PAL
Sales units per unit	0.333 M2/PIECE

### System Certification



Do not use cleaning agents containing hydrofluoric acid.  
It is recommended to fix tiles with a minimum joint of 1,5 mm. Do not fix without joint.  
For big sizes, it is recommended to fix with mortars containing polymeric additives and to use the double glueing technique.  
Mosaic tiles must be grouted.

This document is only commercial and cannot be used as expert opinion, documentary evidence or in any legal or administrative procedure unless authorized by PORCELANOSA S.A.